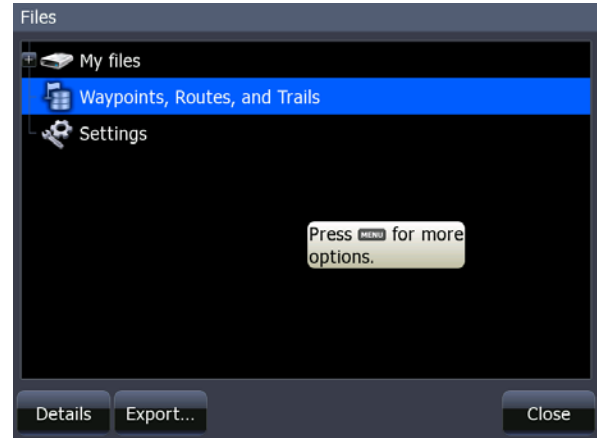


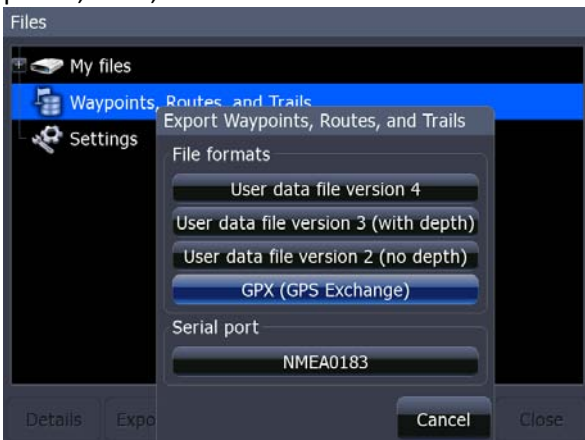
Step 1: Insert a microSD card into a standard SD adapter, then place adapter into the card slot on your HDS unit. Press the Pages key and scroll to the utilities page, select Files and press Enter.



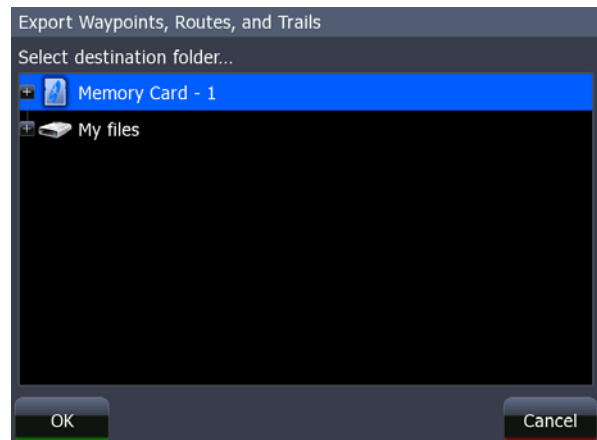
Step 2: Highlight Waypoints, Routes and Trails and press Menu and select export.



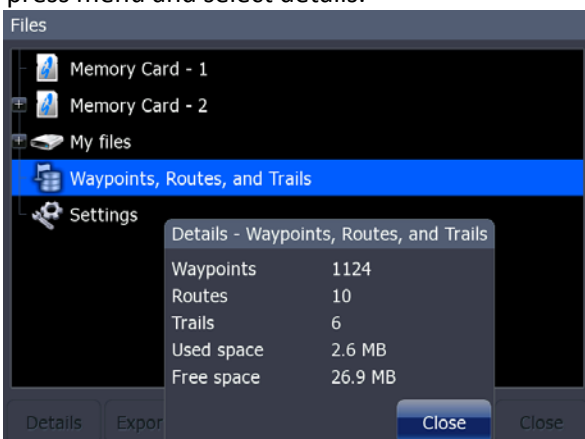
Step 3: Select the output format as GPX (GPS Exchange), this is the format that your Endura uses for all waypoints, trails, and routes.



Step 4: Select the memory card destination for the GPX file.



Note: Endura units can only import .gpx files that are no larger than 3 MB each. To check the size of your data file on you HDS, highlight "Waypoints, Routes and Trails" and press menu and select details.



Step 5: Remove the microSD card from the SD adapter. Insert the microSD card with the HDS gpx file on it into the card slot on the bottom of the Endura unit.

Step 6:

The Endura will ask "Import GPX from Card?" Select "yes". The Endura will then process the GPX file and add it to your onboard waypoint and trails list.* This may take a few minutes to process. Once this is complete, you can return your microSD card and SD adapter back to your HDS unit if you wish.

*The Endura will need to be power cycled off then back on for the waypoint data to appear in the unit.